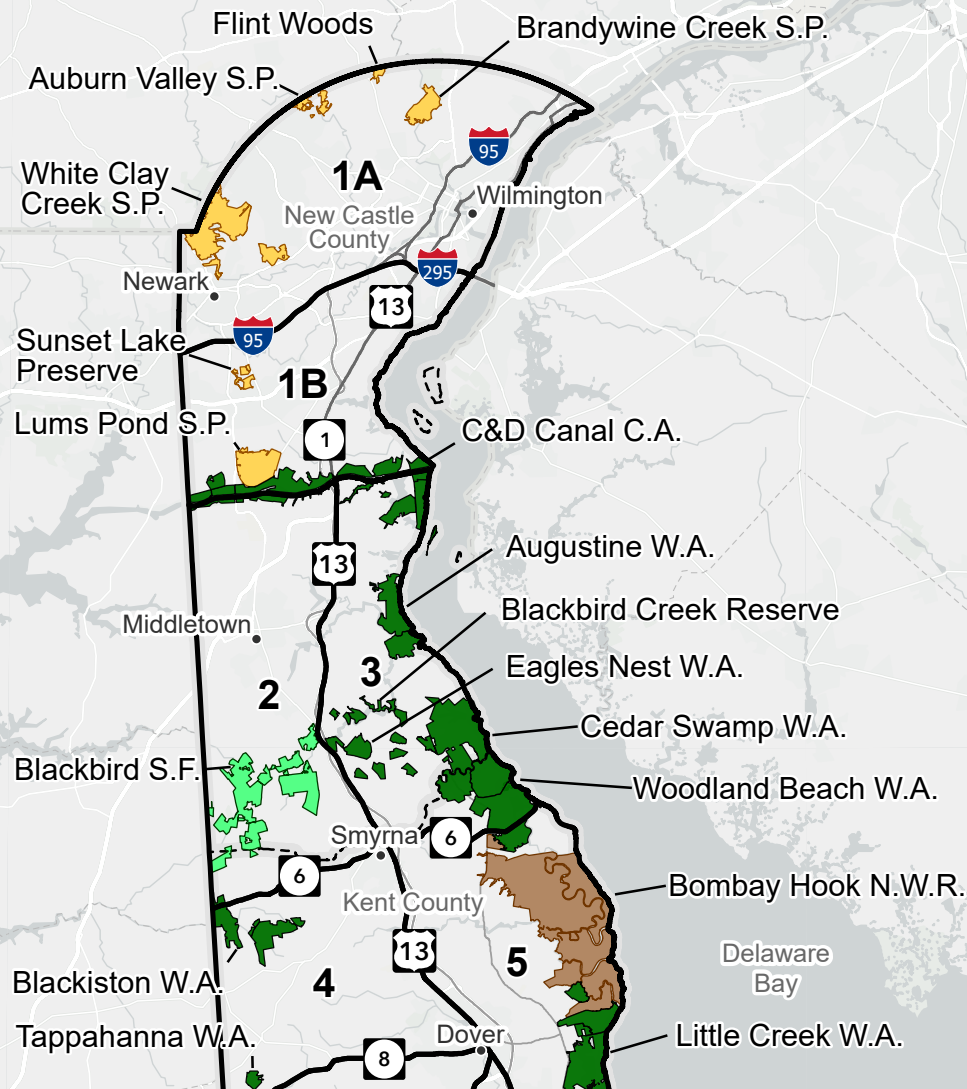


# Delaware Wildlife Management Zones



## WILDLIFE MANAGEMENT ZONE BOUNDARY DESCRIPTIONS

### Zone 1A

All land north of the line created beginning at the Delaware Memorial Bridge and following Interstate 295 to its intersection with Interstate 95 to the Delaware/Maryland border.

### Zone 1B

All land south of the line created beginning at the Delaware Memorial Bridge and following Interstate 295 to its intersection with Interstate 95, thence to the Delaware-Maryland border to the C&D Canal.

### Zone 2

Land bordered north by C&D Canal, south by Route 6, east by Route 13, and west by the Maryland State Line.

### Zone 3

Land bordered north by the C&D Canal, south by Route 6, east by the Delaware River, and west by Route 13.

### Zone 4

Land bordered north by Route 6, south by Route 8, east by Route 13, and west by the Maryland State Line.

### Zone 5

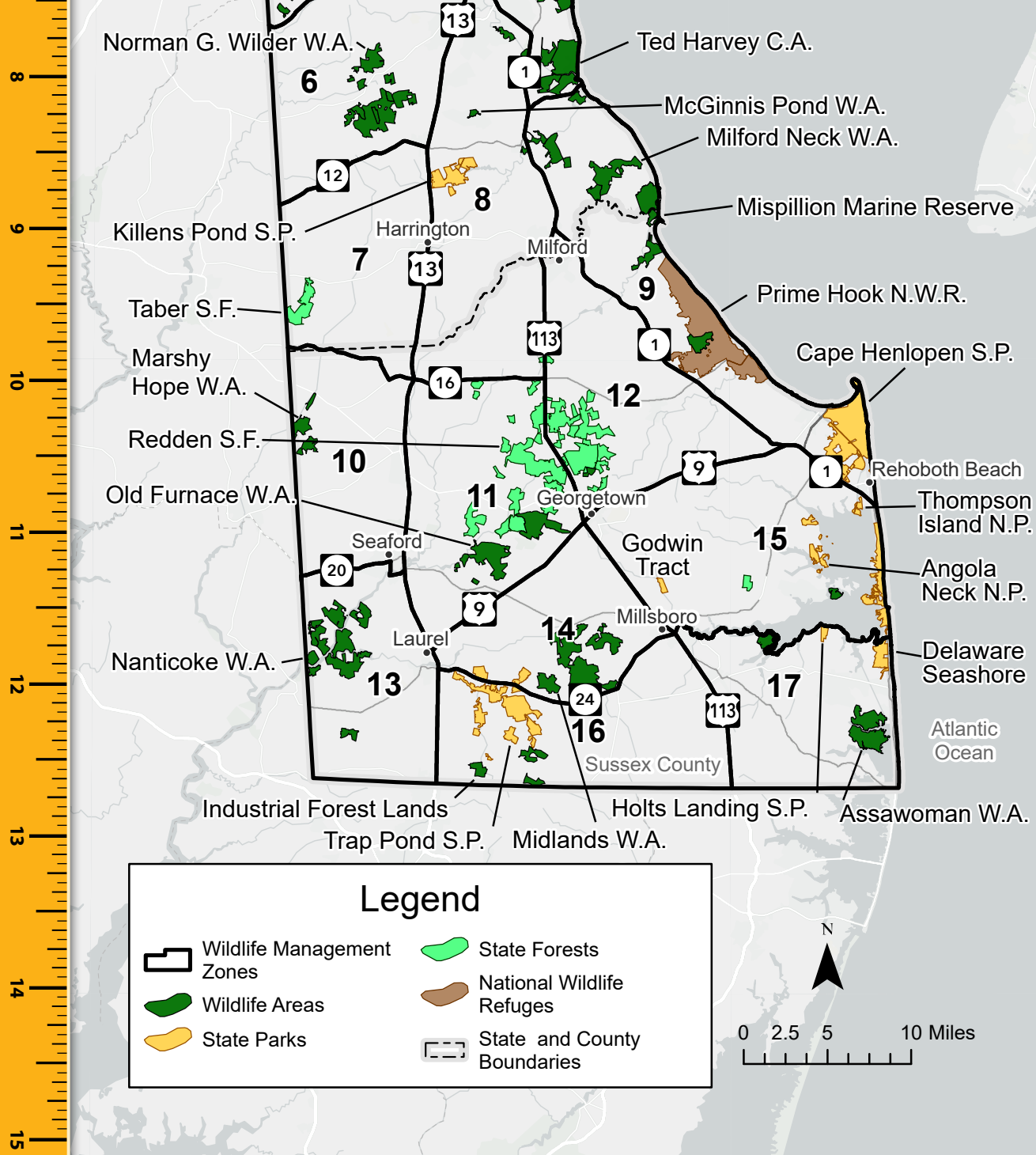
Land bordered north by Route 6, south by Road 18, east by Delaware Bay, and west by Routes 13 and 113.

### Zone 6

Land bordered north by Route 8, south by Route 12, east by Routes 13 and 113, and west by the Maryland State Line.

### Zone 7

Land bordered north by Route 12, south by Route 16, east by Route 13, and west by the Maryland State Line.



- Zone 8**  
Land bordered north by intersection of Routes 13 and 113, south by Route 16, east by Route 113 and west by Route 13.
- Zone 9**  
Land bordered north by Road 18, south by Route 1, east by Delaware Bay and Atlantic Ocean and west by Routes 113 and 1.
- Zone 10**  
Land bordered north by Route 16, south by Route 20, east by Route 13, and west by the Maryland State Line.
- Zone 11**  
Land bordered north by Route 16, south by Route 9, east by Route 113 and west by Route 13.
- Zone 12**  
Land bordered north by intersection of Routes 113 and 1, south by Route 9, east by Route 1 and west by Route 113.
- Zone 13**  
Land bordered north by Route 20, south by Maryland State Line, east by Route 13, and west by Maryland State Line.
- Zone 14**  
Land bordered north by Route 9, south by Route 24, east by Route 113, and south by Route 24.
- Zone 15**  
Land bordered north by Route 9, south by south shore of Indian River Bay, east by the Atlantic Ocean, and west by Route 113.
- Zone 16**  
Land bordered north by Route 24, south by Maryland State Line, east by Route 113, and west by Route 13.
- Zone 17**  
Land bordered north by Indian River Bay, south by the Maryland State Line, east by the Atlantic Ocean, and west by Route 113.